

Parksville Community Park Construction Update

The City has been working with contractor, Milestone Equipment Contracting, to establish a firm schedule for necessary road closures as part of the gathering plaza project in the Parksville Community Park. To achieve this work, project construction will require two temporary closures of road access to Sandcastle Drive to vehicles this summer. Signage will be posted at the entrance and throughout the park.

The first closure will begin on Monday, June 19 through Monday, July 3 with regular vehicle access to Sandcastle Drive closed at Salish Sea Drive. Sandcastle Drive along to Arbutus Point will be open to pedestrians and bicycles. Additional accessible parking will be available near the Lions Ventureland Playground on Salish Sea Drive. Vehicle parking in the gravel lots near the sports fields and behind the curling rink will be open for public use.

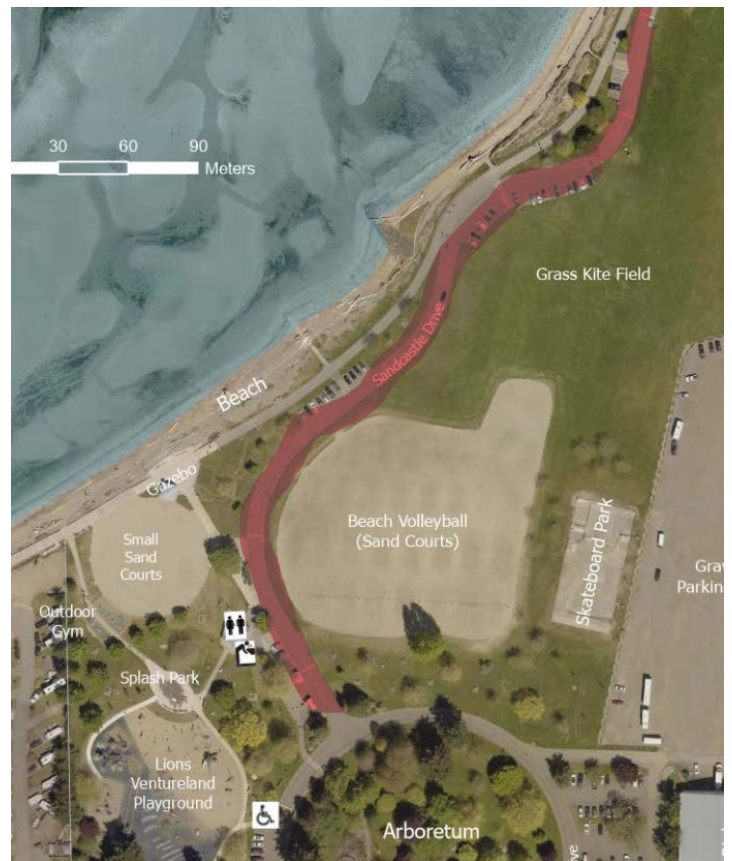
This planned construction schedule ensures Sandcastle Drive will be open for this summer's popular Parksville Beach Festival and Quality Foods Sand Sculpting Competition and Exhibition to be held July 13 to August 20. Sandcastle Drive will close again on August 23 to accommodate project completion. As with previous years to facilitate Canada Day celebrations and activities, the Parksville Community Park will be closed to all vehicles.

The City sincerely understands and apologizes for the disruption to residents and visitors who will use the park during this time. Please refer to [Let's Talk Parksville](#) for information about the many planned improvements to the Parksville Community Park.

###

For more information:

Deb Tardiff, Manager of Communications
communications@parksville.ca; 250 954-3073



The City of Parksville is located on the traditional territory of the Coast Salish Nations, home to the Snaw-Naw-As First Nation and the Qualicum First Nation.