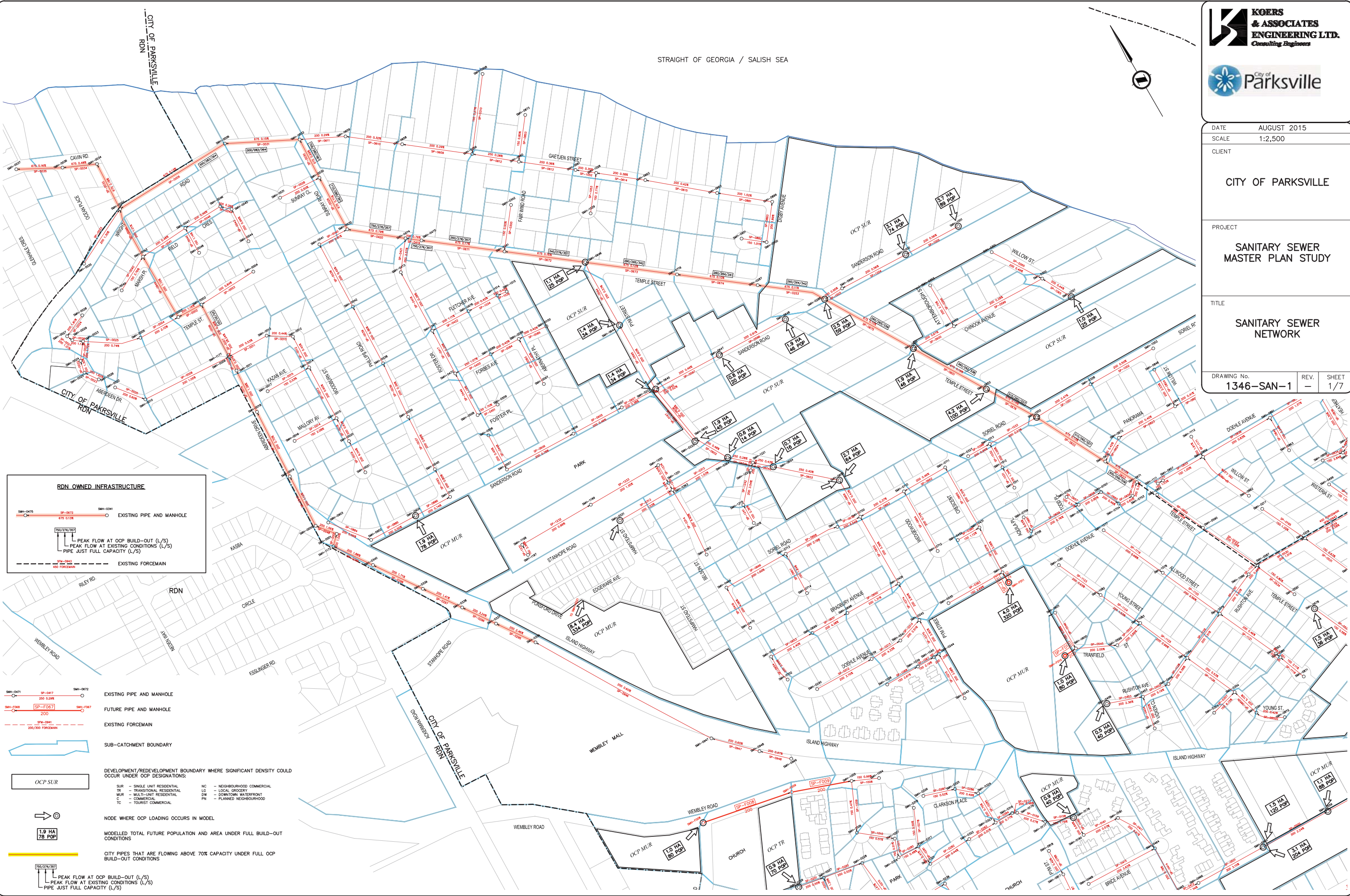


DATE	AUGUST 2015
SCALE	1:2,500
CLIENT	CITY OF PARKSVILLE
PROJECT	SANITARY SEWER MASTER PLAN STUDY
TITLE	SANITARY SEWER NETWORK
DRAWING No.	1346-SAN-1
REV.	-
SHEET	1/7

STRAIGHT OF GEORGIA / SALISH SEA



RDN OWNED INFRASTRUCTURE

SP-0475 SP-0476 SP-0477 EXISTING PIPE AND MANHOLE
675 0.138 200 0.201

SP-0478 SP-0479 SP-0480 PEAK FLOW AT OCP BUILD-OUT (L/S)
170/274/301 PEAK FLOW AT EXISTING CONDITIONS (L/S)
400 0.142 200 0.142 PIPE JUST FULL CAPACITY (L/S)

SP-0481 SP-0482 EXISTING FORCEMAIN
200 0.142 400 0.142

SP-0471 SP-0472 SP-0473 EXISTING PIPE AND MANHOLE
200 0.208 200 0.208

SP-0474 SP-0475 SP-0476 FUTURE PIPE AND MANHOLE
200

SP-0477 SP-0478 EXISTING FORCEMAIN
200/300 FORCEMAIN

SUB-CATCHMENT BOUNDARY

DEVELOPMENT/REDEVELOPMENT BOUNDARY WHERE SIGNIFICANT DENSITY COULD OCCUR UNDER OCP DESIGNATIONS:

SUR - SINGLE UNIT RESIDENTIAL
TR - TRANSITIONAL RESIDENTIAL
MUR - MULTI-UNIT RESIDENTIAL
C - COMMERCIAL
TC - TOURIST COMMERCIAL

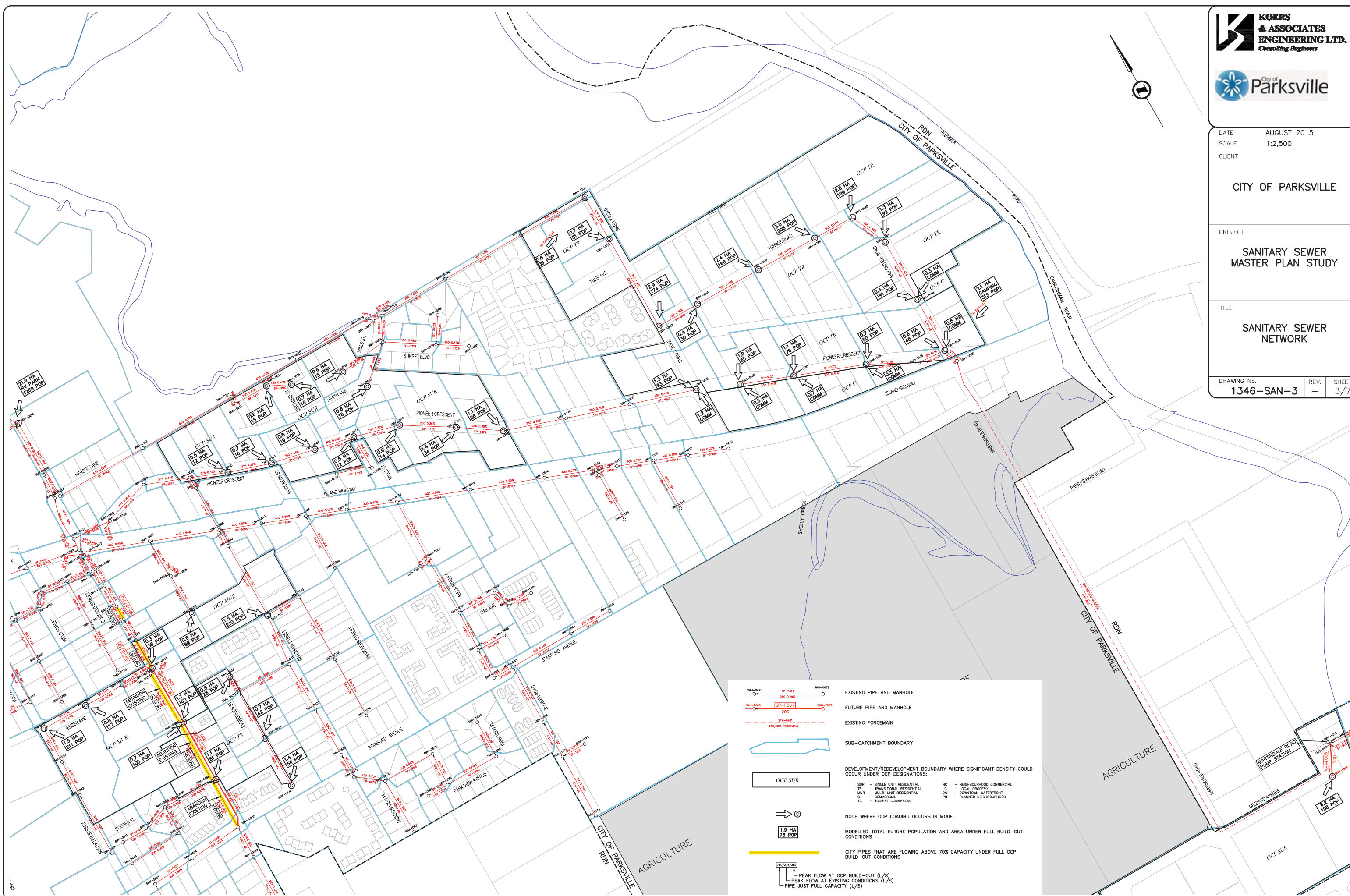
NC - NEIGHBOURHOOD COMMERCIAL
LG - LOCAL GROCERY
DW - DOWNTOWN WATERFRONT
PN - PLANNED NEIGHBOURHOOD

NODE WHERE OCP LOADING OCCURS IN MODEL

1.9 HA 78 POP
MODELLED TOTAL FUTURE POPULATION AND AREA UNDER FULL BUILD-OUT CONDITIONS

CITY PIPES THAT ARE FLOWING ABOVE 70% CAPACITY UNDER FULL OCP BUILD-OUT CONDITIONS

SP-0479 SP-0480 SP-0481 PEAK FLOW AT OCP BUILD-OUT (L/S)
170/274/301 PEAK FLOW AT EXISTING CONDITIONS (L/S)
400 0.142 200 0.142 PIPE JUST FULL CAPACITY (L/S)



EXISTING PIPE AND MANHOLE
 SP-0471 200 0.258 SP-0472

FUTURE PIPE AND MANHOLE
 SP-F067

EXISTING FORCEMAIN
 SP-0941 200/300 FORCEMAIN

SUB-CATCHMENT BOUNDARY
 OCP SUR

DEVELOPMENT/REDEVELOPMENT BOUNDARY WHERE SIGNIFICANT DENSITY COULD OCCUR UNDER OCP DESIGNATIONS:

SR - SINGLE UNIT RESIDENTIAL	NC - NEIGHBOURHOOD COMMERCIAL
TR - TRANSITIONAL RESIDENTIAL	LG - LOCAL GROCERY
MUR - MULTI-UNIT RESIDENTIAL	DW - DOWNTOWN WATERFRONT
C - COMMERCIAL	PN - PLANNED NEIGHBOURHOOD
TC - TOURIST COMMERCIAL	

NODE WHERE OCP LOADING OCCURS IN MODEL
 1.9 HA 78 POP

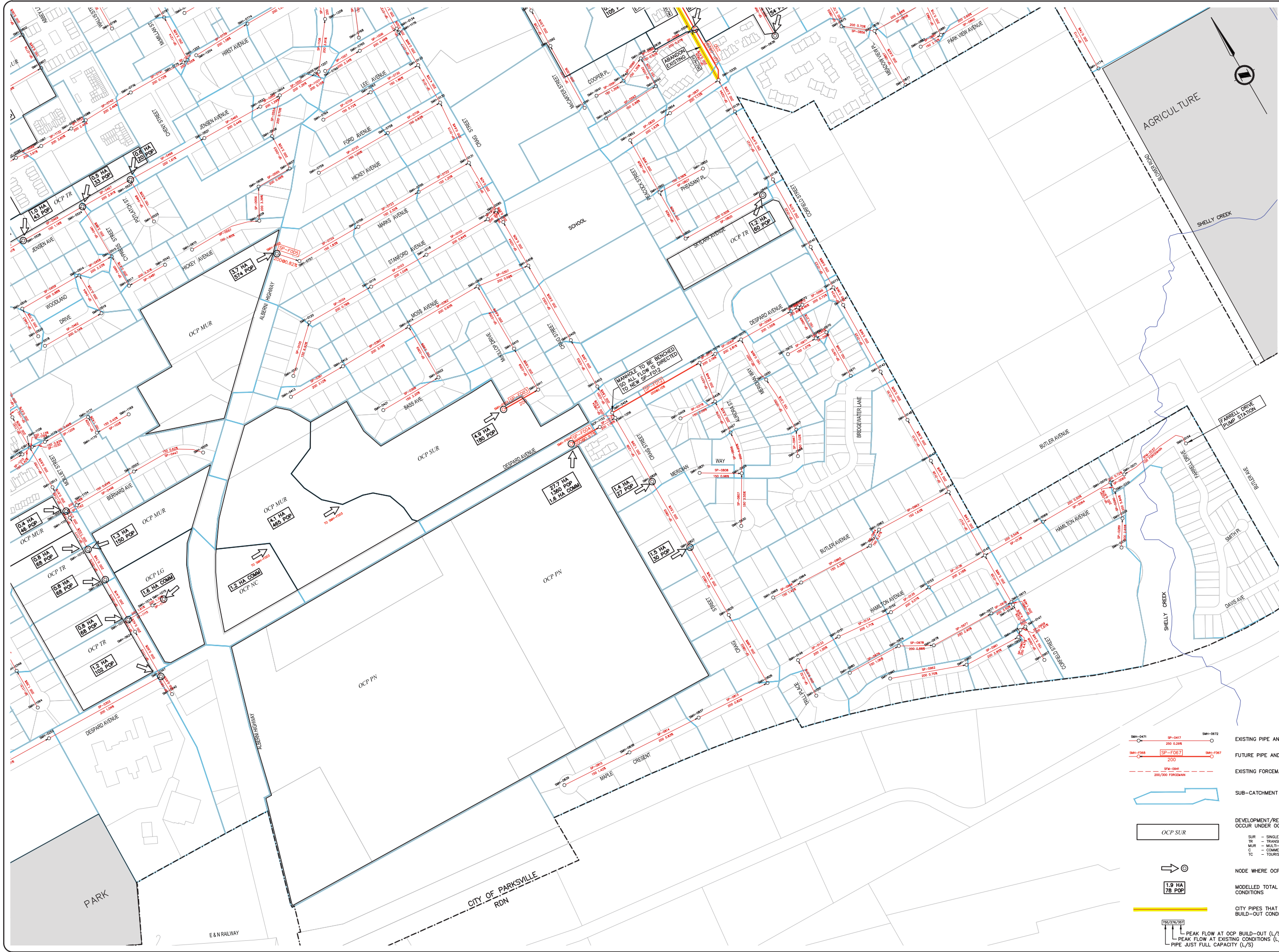
MODELLED TOTAL FUTURE POPULATION AND AREA UNDER FULL BUILD-OUT CONDITIONS

CITY PIPES THAT ARE FLOWING ABOVE 70% CAPACITY UNDER FULL OCP BUILD-OUT CONDITIONS
 750/276/300

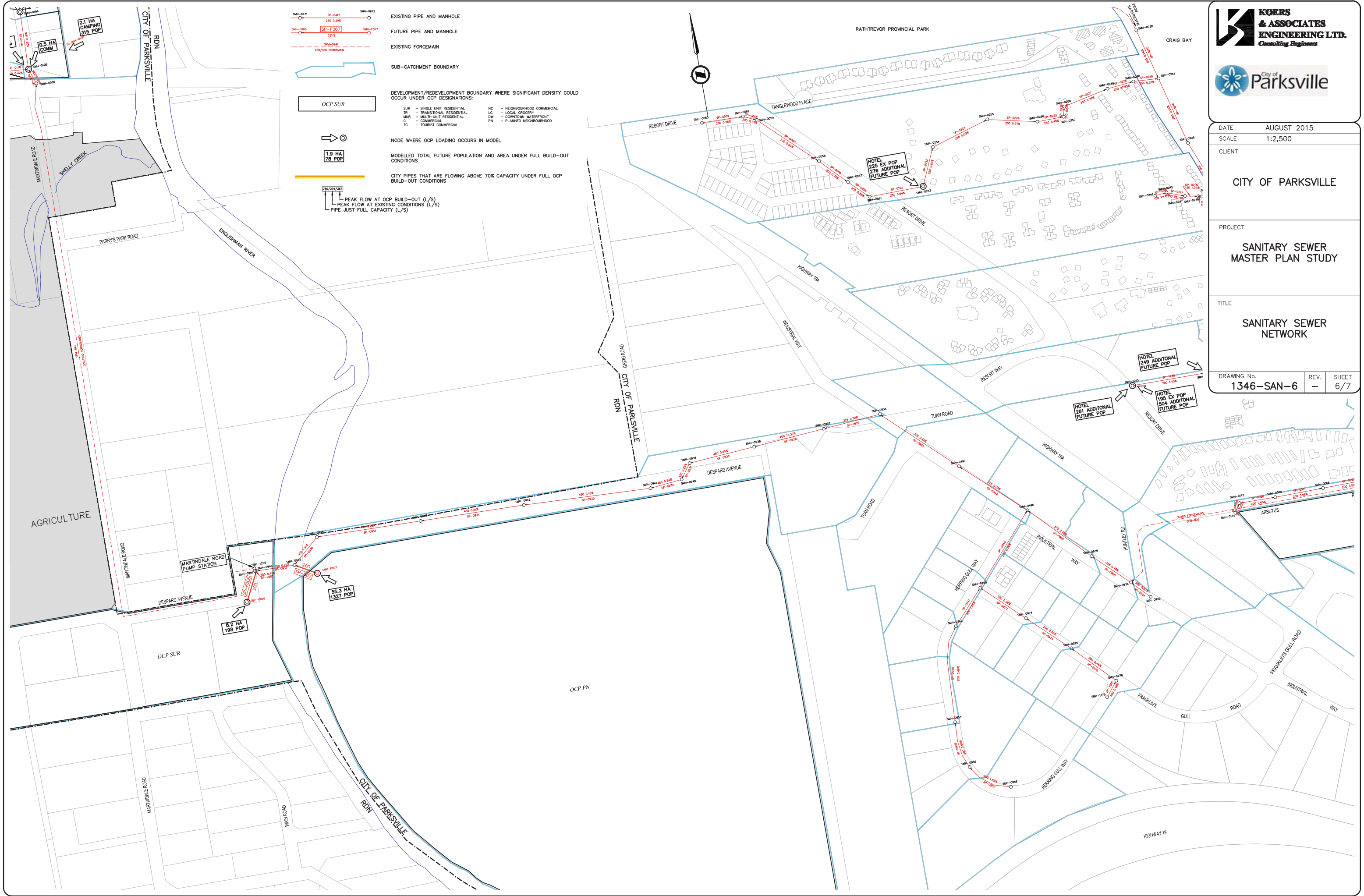
PEAK FLOW AT OCP BUILD-OUT (L/S)
 PEAK FLOW AT EXISTING CONDITIONS (L/S)
 PIPE JUST FULL CAPACITY (L/S)

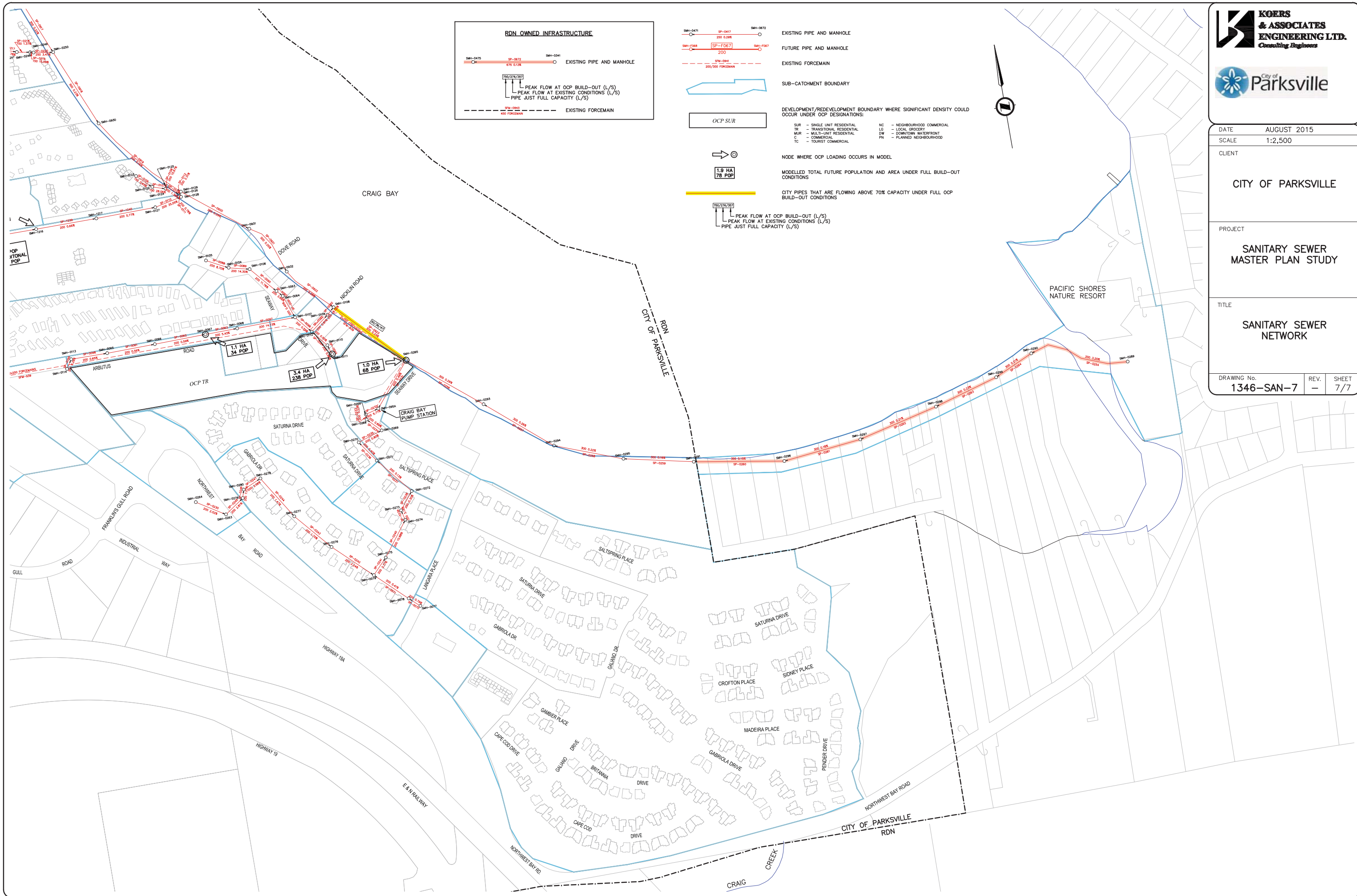


- SMH-0471 SP-0417 SMH-0472
200 0.238
EXISTING PIPE AND MANHOLE
- SMH-0468 SP-F067 SMH-F067
200
FUTURE PIPE AND MANHOLE
- SP-0941
200/300 FORCEMAIN
EXISTING FORCEMAIN
- SUB-CATCHMENT BOUNDARY
- OCP SUR
DEVELOPMENT/REDEVELOPMENT BOUNDARY WHERE SIGNIFICANT DENSITY COULD OCCUR UNDER OCP DESIGNATIONS:
- SUR - SINGLE UNIT RESIDENTIAL
TR - TRANSITIONAL RESIDENTIAL
MUR - MULTI-UNIT RESIDENTIAL
C - COMMERCIAL
TC - TOURIST COMMERCIAL
- NC - NEIGHBOURHOOD COMMERCIAL
LG - LOCAL GROCERY
DW - DOWNTOWN WATERFRONT
PN - PLANNED NEIGHBOURHOOD
- NODE WHERE OCP LOADING OCCURS IN MODEL
- 1.9 HA 78 POP
MODELLED TOTAL FUTURE POPULATION AND AREA UNDER FULL BUILD-OUT CONDITIONS
- CITY PIPES THAT ARE FLOWING ABOVE 70% CAPACITY UNDER FULL OCP BUILD-OUT CONDITIONS
- PEAK FLOW AT OCP BUILD-OUT (L/S)
PEAK FLOW AT EXISTING CONDITIONS (L/S)
PIPE JUST FULL CAPACITY (L/S)



	EXISTING PIPE AND MANHOLE
	FUTURE PIPE AND MANHOLE
	EXISTING FORCEMAIN
	SUB-CATCHMENT BOUNDARY
	DEVELOPMENT/REDEVELOPMENT BOUNDARY WHERE SIGNIFICANT DENSITY COULD OCCUR UNDER OCP DESIGNATIONS:
	SUR - SINGLE UNIT RESIDENTIAL
	TR - TRANSITIONAL RESIDENTIAL
	MUR - MULTI-UNIT RESIDENTIAL
	LG - LOCAL GROCERY
	C - COMMERCIAL
	TC - TOURIST COMMERCIAL
	NC - NEIGHBOURHOOD COMMERCIAL
	DW - DOWNTOWN WATERFRONT
	PN - PLANNED NEIGHBOURHOOD
	NODE WHERE OCP LOADING OCCURS IN MODEL
	MODELLED TOTAL FUTURE POPULATION AND AREA UNDER FULL BUILD-OUT CONDITIONS
	CITY PIPES THAT ARE FLOWING ABOVE 70% CAPACITY UNDER FULL OCP BUILD-OUT CONDITIONS
	PEAK FLOW AT OCP BUILD-OUT (L/S)
	PEAK FLOW AT EXISTING CONDITIONS (L/S)
	PIPE JUST FULL CAPACITY (L/S)





RDN OWNED INFRASTRUCTURE

SMH-0475 SP-0472 SMH-0341
 675 0.138 EXISTING PIPE AND MANHOLE

750/276/707
 PEAK FLOW AT OCP BUILD-OUT (L/S)
 PEAK FLOW AT EXISTING CONDITIONS (L/S)
 PIPE JUST FULL CAPACITY (L/S)

SP-0483
 400 FORCEMAIN EXISTING FORCEMAIN

SMH-0471 SP-0417 SMH-0672
 250 0.298 EXISTING PIPE AND MANHOLE

SMH-F068 SP-F067 SMH-F067
 200 FUTURE PIPE AND MANHOLE

SP-0441
 200/300 FORCEMAIN EXISTING FORCEMAIN

Sub-catchment boundary

OCP SUR

Node where OCP loading occurs in model

1.9 HA
 78 POP
 Modelled total future population and area under full build-out conditions

750/276/707
 PEAK FLOW AT OCP BUILD-OUT (L/S)
 PEAK FLOW AT EXISTING CONDITIONS (L/S)
 PIPE JUST FULL CAPACITY (L/S)

DEVELOPMENT/REDEVELOPMENT BOUNDARY WHERE SIGNIFICANT DENSITY COULD OCCUR UNDER OCP DESIGNATIONS:

SR - SINGLE UNIT RESIDENTIAL	NC - NEIGHBOURHOOD COMMERCIAL
TR - TRANSITIONAL RESIDENTIAL	LG - LOCAL GROCERY
MUR - MULTI-UNIT RESIDENTIAL	DW - DOWNTOWN WATERFRONT
C - COMMERCIAL	PN - PLANNED NEIGHBOURHOOD
TC - TOURIST COMMERCIAL	