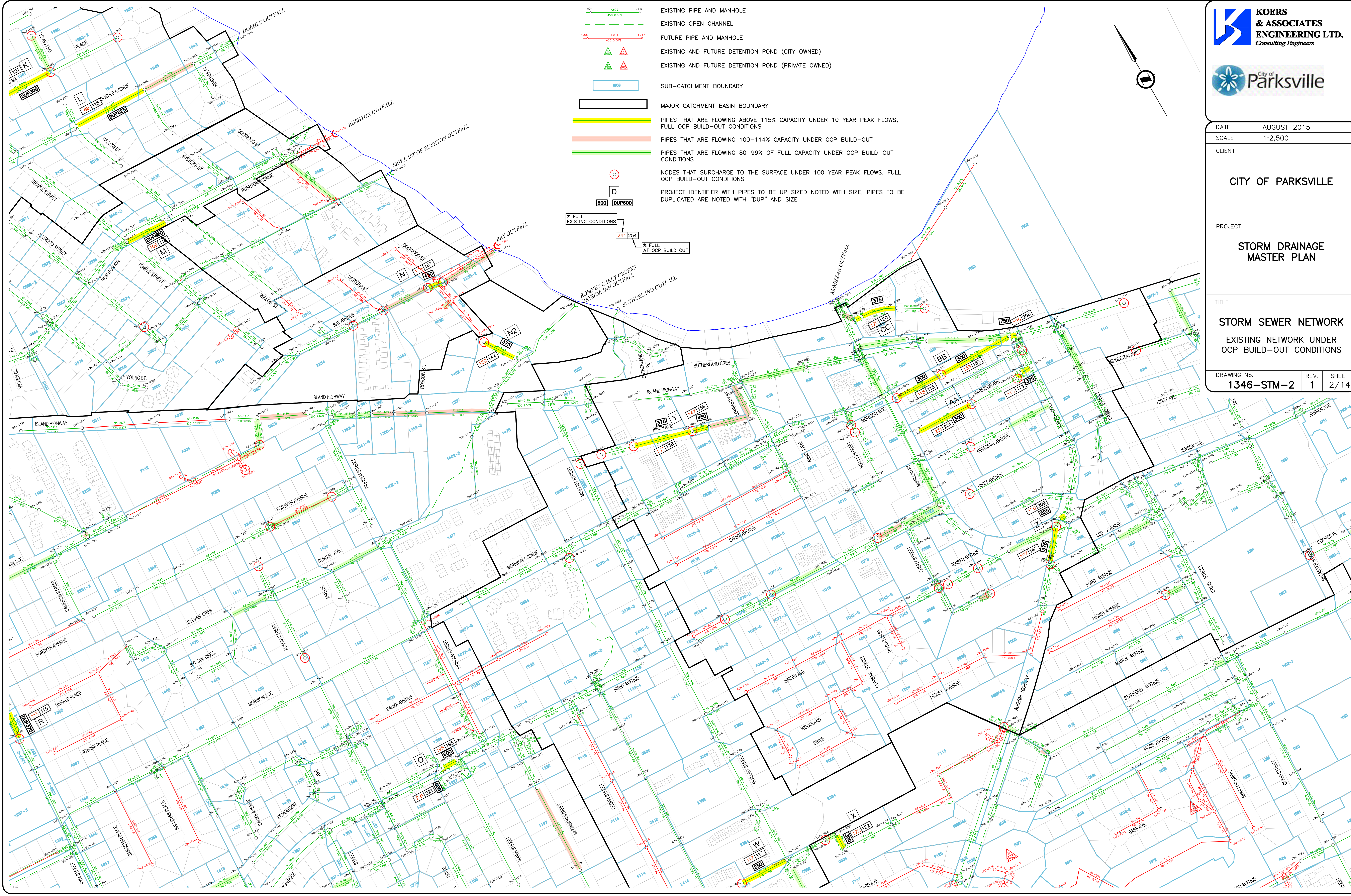
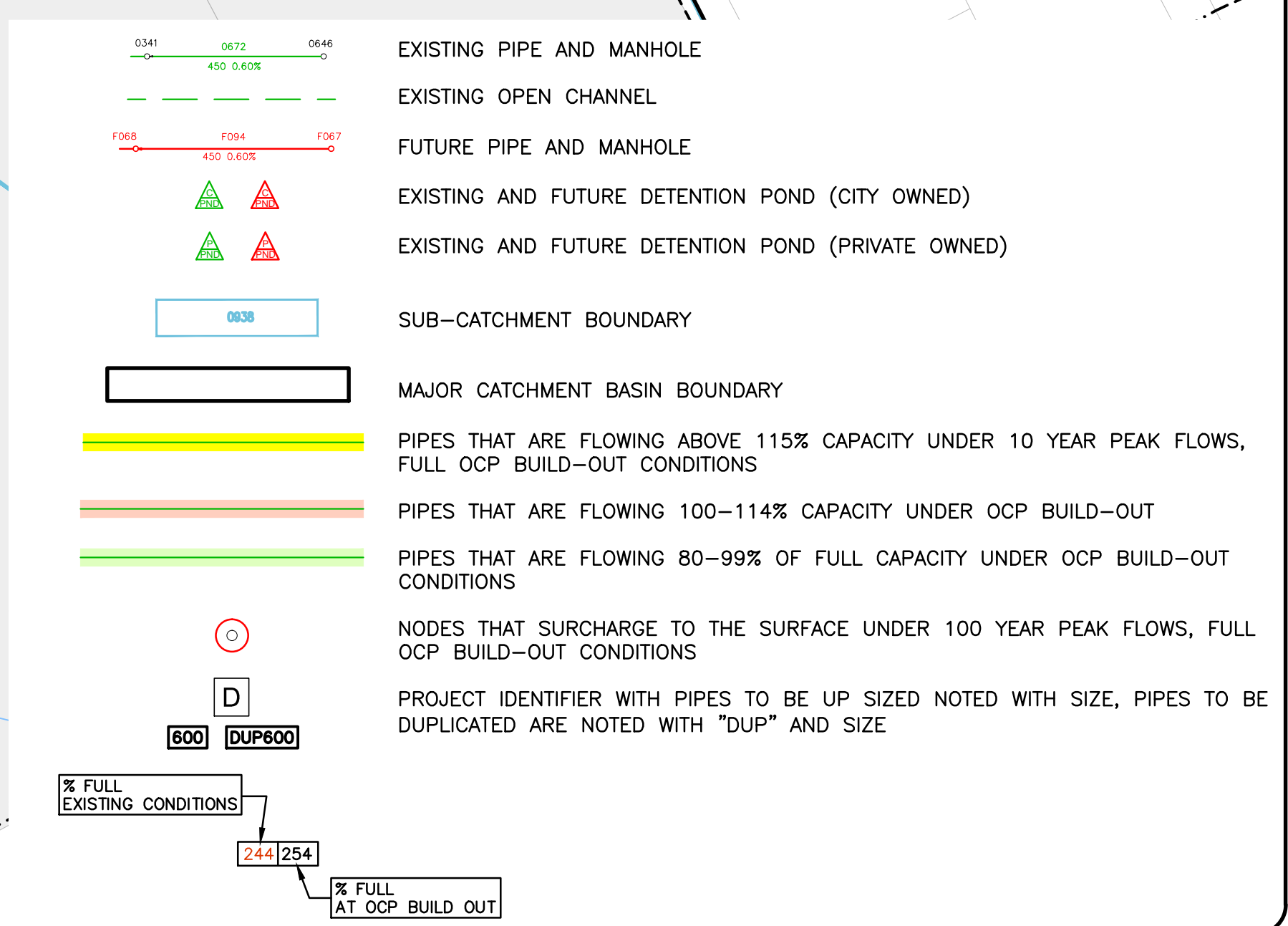
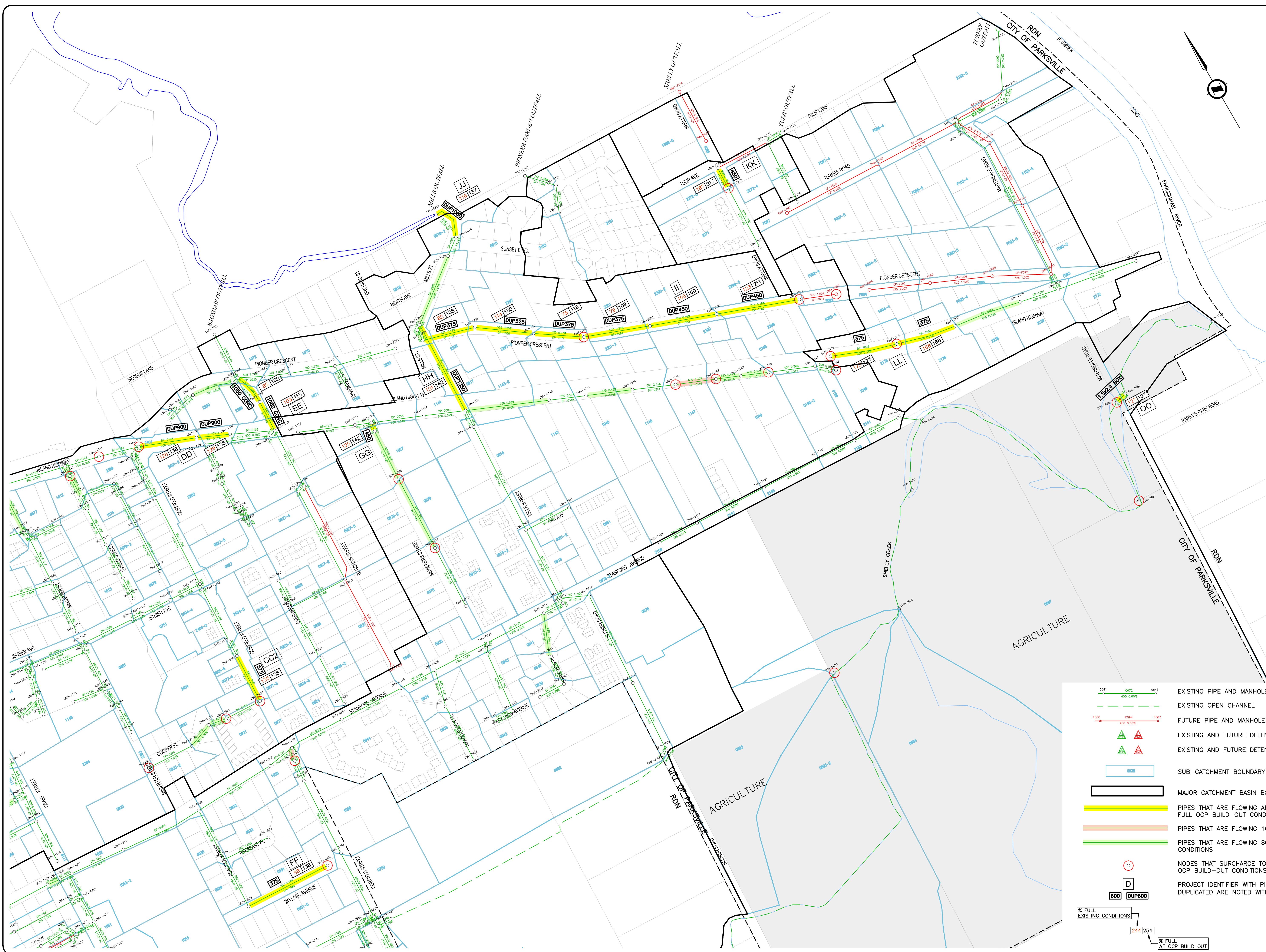
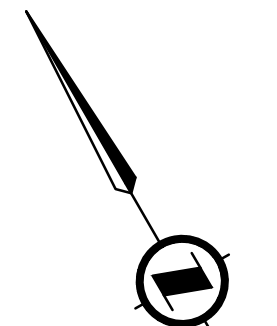
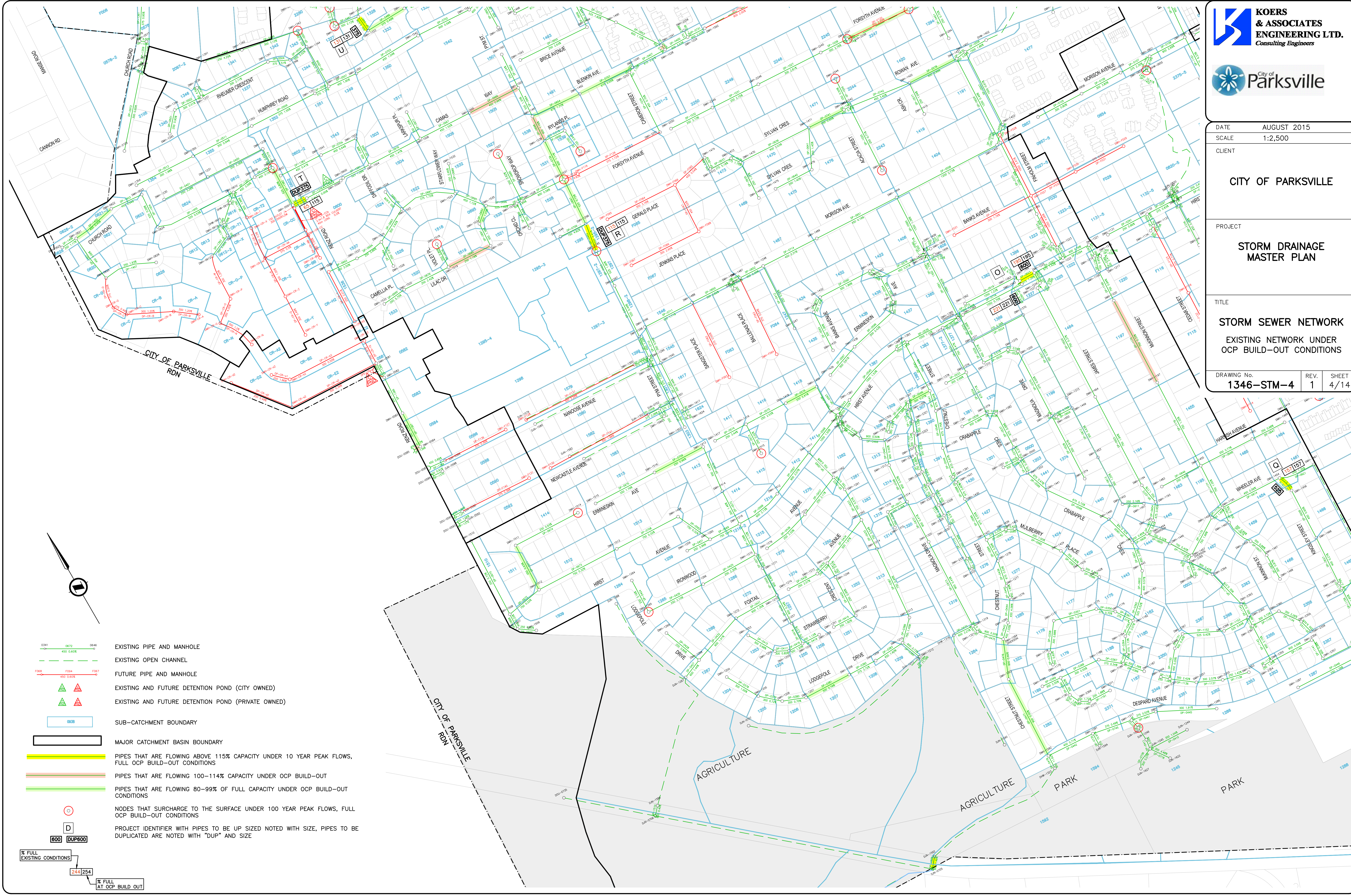


- EXISTING PIPE AND MANHOLE
- EXISTING OPEN CHANNEL
- FUTURE PIPE AND MANHOLE
- ▲ EXISTING AND FUTURE DETENTION POND (CITY OWNED)
- ▲ EXISTING AND FUTURE DETENTION POND (PRIVATE OWNED)
- 0638 SUB-CATCHMENT BOUNDARY
- MAJOR CATCHMENT BASIN BOUNDARY
- PIPES THAT ARE FLOWING ABOVE 115% CAPACITY UNDER 10 YEAR PEAK FLOWS, FULL OCP BUILD-OUT CONDITIONS
- PIPES THAT ARE FLOWING 100-114% CAPACITY UNDER OCP BUILD-OUT
- PIPES THAT ARE FLOWING 80-99% OF FULL CAPACITY UNDER OCP BUILD-OUT CONDITIONS
- D NODES THAT SURCHARGE TO THE SURFACE UNDER 100 YEAR PEAK FLOWS, FULL OCP BUILD-OUT CONDITIONS
- D PROJECT IDENTIFIER WITH PIPES TO BE UP SIZED NOTED WITH SIZE, PIPES TO BE DUPLICATED ARE NOTED WITH "DUP" AND SIZE
- 600 DUP600
- 244 254 FULL EXISTING CONDITIONS
- FULL AT OCP BUILD OUT

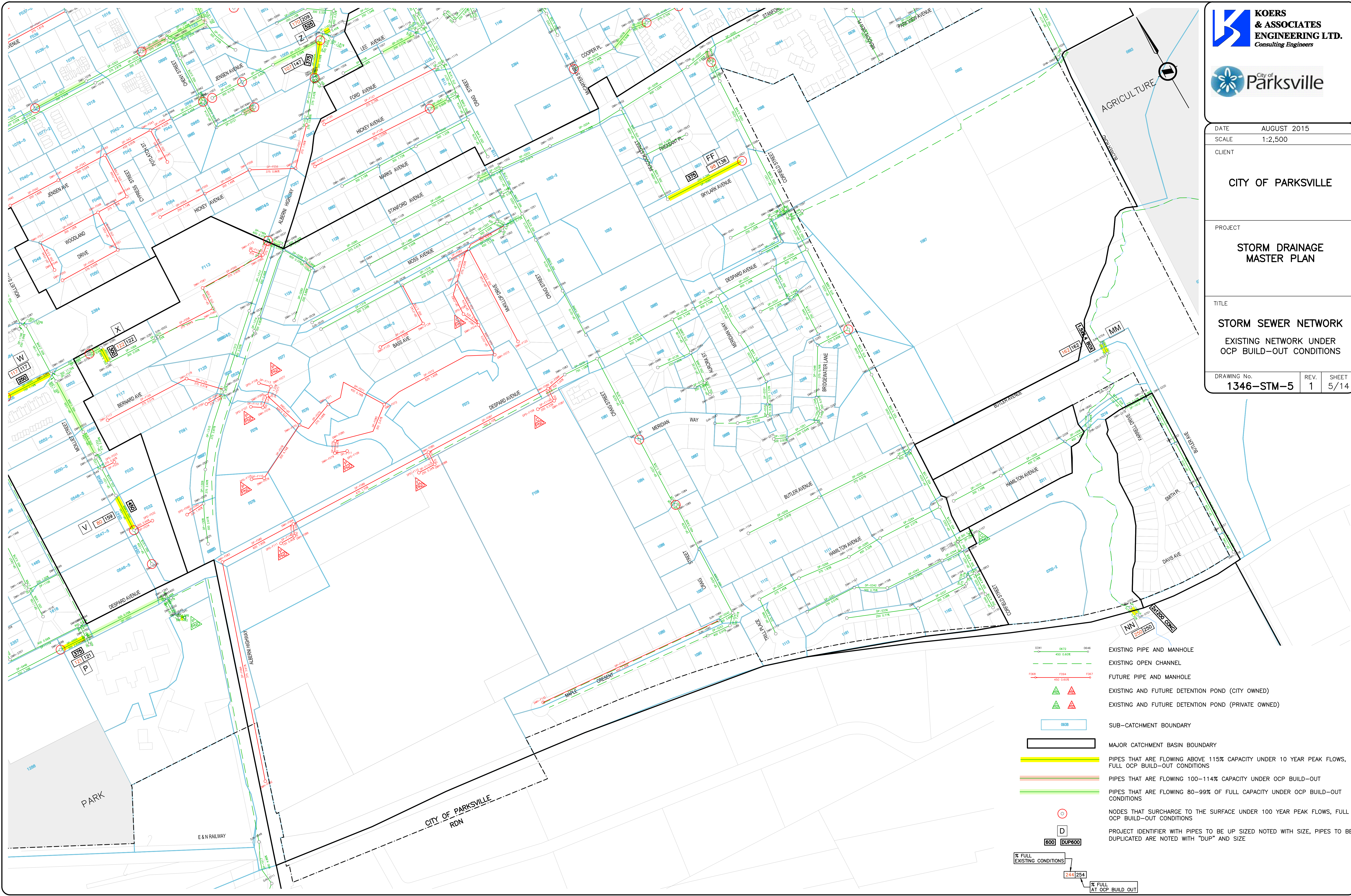
- EXISTING PIPE AND MANHOLE
- EXISTING OPEN CHANNEL
- FUTURE PIPE AND MANHOLE
- EXISTING AND FUTURE DETENTION POND (CITY OWNED)
- EXISTING AND FUTURE DETENTION POND (PRIVATE OWNED)
- SUB-CATCHMENT BOUNDARY
- MAJOR CATCHMENT BASIN BOUNDARY
- PIPES THAT ARE FLOWING ABOVE 115% CAPACITY UNDER 10 YEAR PEAK FLOWS, FULL OCP BUILD-OUT CONDITIONS
- PIPES THAT ARE FLOWING 100-114% CAPACITY UNDER OCP BUILD-OUT
- PIPES THAT ARE FLOWING 80-99% OF FULL CAPACITY UNDER OCP BUILD-OUT CONDITIONS
- NODES THAT SURCHARGE TO THE SURFACE UNDER 100 YEAR PEAK FLOWS, FULL OCP BUILD-OUT CONDITIONS
- PROJECT IDENTIFIER WITH PIPES TO BE UP SIZED NOTED WITH SIZE, PIPES TO BE DUPLICATED ARE NOTED WITH "DUP" AND SIZE
- FULL EXISTING CONDITIONS
- FULL AT OCP BUILD OUT













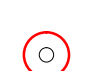



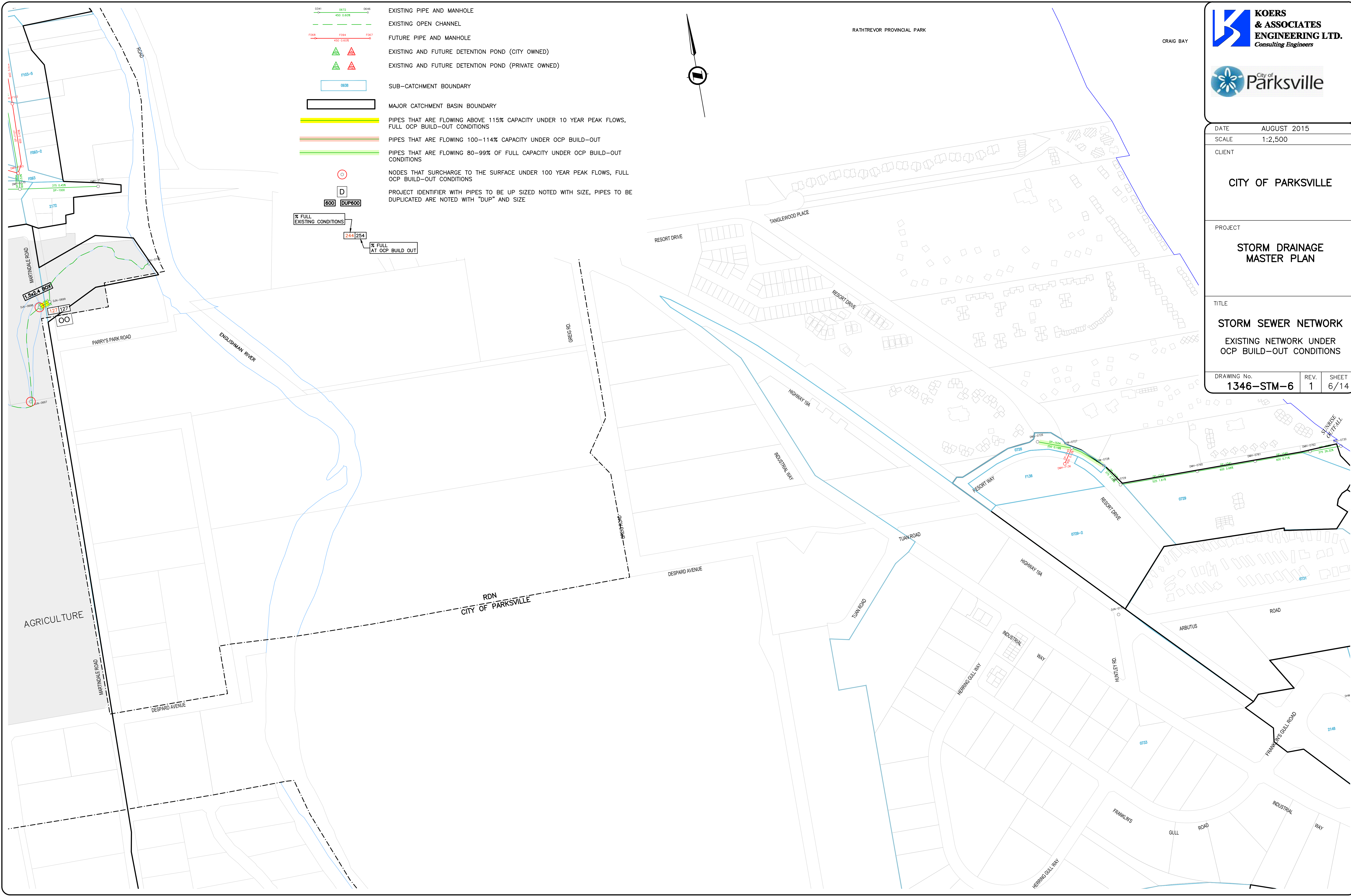
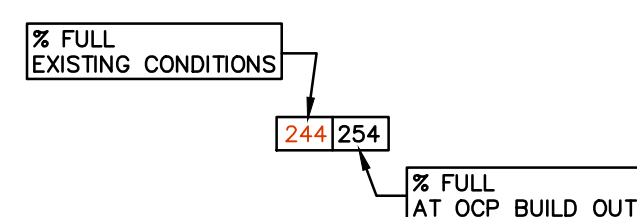


- EXISTING PIPE AND MANHOLE
- EXISTING OPEN CHANNEL
- FUTURE PIPE AND MANHOLE
- ▲ EXISTING AND FUTURE DETENTION POND (CITY OWNED)
- ▲ EXISTING AND FUTURE DETENTION POND (PRIVATE OWNED)
- SUB-CATCHMENT BOUNDARY
- MAJOR CATCHMENT BASIN BOUNDARY
- PIPES THAT ARE FLOWING ABOVE 115% CAPACITY UNDER 10 YEAR PEAK FLOWS, FULL OCP BUILD-OUT CONDITIONS
- PIPES THAT ARE FLOWING 100-114% CAPACITY UNDER OCP BUILD-OUT
- PIPES THAT ARE FLOWING 80-99% OF FULL CAPACITY UNDER OCP BUILD-OUT CONDITIONS
- NODES THAT SURCHARGE TO THE SURFACE UNDER 100 YEAR PEAK FLOWS, FULL OCP BUILD-OUT CONDITIONS
- D PROJECT IDENTIFIER WITH PIPES TO BE UP SIZED NOTED WITH SIZE, PIPES TO BE DUPLICATED ARE NOTED WITH "DUP" AND SIZE
- 600 DUP600
- 244 254 X FULL AT OCP BUILD OUT



	EXISTING PIPE AND MANHOLE
	EXISTING OPEN CHANNEL
	FUTURE PIPE AND MANHOLE
	EXISTING AND FUTURE DETENTION POND (CITY OWNED)
	EXISTING AND FUTURE DETENTION POND (PRIVATE OWNED)
	SUB-CATCHMENT BOUNDARY
	MAJOR CATCHMENT BASIN BOUNDARY
	PIPES THAT ARE FLOWING ABOVE 115% CAPACITY UNDER 10 YEAR PEAK FLOWS, FULL OCP BUILD-OUT CONDITIONS
	PIPES THAT ARE FLOWING 100-114% CAPACITY UNDER OCP BUILD-OUT
	PIPES THAT ARE FLOWING 80-99% OF FULL CAPACITY UNDER OCP BUILD-OUT CONDITIONS
	NODES THAT SURCHARGE TO THE SURFACE UNDER 100 YEAR PEAK FLOWS, FULL OCP BUILD-OUT CONDITIONS
	PROJECT IDENTIFIER WITH PIPES TO BE UP SIZED NOTED WITH SIZE, PIPES TO BE DUPLICATED ARE NOTED WITH "DUP" AND SIZE
	600
	DUP600
	244 254
	% FULL EXISTING CONDITIONS
	% FULL AT OCP BUILD OUT

-  EXISTING PIPE AND MANHOLE
-  EXISTING OPEN CHANNEL
-  FUTURE PIPE AND MANHOLE
-  EXISTING AND FUTURE DETENTION POND (CITY OWNED)
-  EXISTING AND FUTURE DETENTION POND (PRIVATE OWNED)
-  SUB-CATCHMENT BOUNDARY
-  MAJOR CATCHMENT BASIN BOUNDARY
-  PIPES THAT ARE FLOWING ABOVE 115% CAPACITY UNDER 10 YEAR PEAK FLOWS, FULL OCP BUILD-OUT CONDITIONS
-  PIPES THAT ARE FLOWING 100-114% CAPACITY UNDER OCP BUILD-OUT CONDITIONS
-  PIPES THAT ARE FLOWING 80-99% OF FULL CAPACITY UNDER OCP BUILD-OUT CONDITIONS
-  NODES THAT SURCHARGE TO THE SURFACE UNDER 100 YEAR PEAK FLOWS, FULL OCP BUILD-OUT CONDITIONS
-  PROJECT IDENTIFIER WITH PIPES TO BE UP SIZED NOTED WITH SIZE, PIPES TO BE DUPLICATED ARE NOTED WITH "DUP" AND SIZE



AGRICULTURE

MARTINDALE ROAD
PARRY'S PARK ROAD
ENGLISHMAN RIVER

RATHREVOR PROVINCIAL PARK
CRAIG BAY
TANGLEWOOD PLACE
RESORT DRIVE
INDUSTRIAL WAY
TUAN ROAD
HIGHWAY 10A
RESORT WAY
FRANKLIN'S GULL ROAD
INDUSTRIAL WAY
FRANKLIN'S GULL ROAD
INDUSTRIAL WAY
HUNTERLEY ROAD
FRANKLIN'S GULL ROAD
INDUSTRIAL WAY
FRANKLIN'S GULL ROAD
INDUSTRIAL WAY
FRANKLIN'S GULL ROAD
INDUSTRIAL WAY

RDN
CITY OF PARKSVILLE

15x24 BOX
127 127
OO

244 254
% FULL AT OCP BUILD OUT

— 0.341 0.672 0.645
450 0.60X
EXISTING PIPE AND MANHOLE
--- EXISTING OPEN CHANNEL
— F068 F094 F067
450 0.60X
FUTURE PIPE AND MANHOLE
▲ ▲
EXISTING AND FUTURE DETENTION POND (CITY OWNED)
▲ ▲
EXISTING AND FUTURE DETENTION POND (PRIVATE OWNED)
0638
SUB-CATCHMENT BOUNDARY

MAJOR CATCHMENT BASIN BOUNDARY

PIPES THAT ARE FLOWING ABOVE 115% CAPACITY UNDER 10 YEAR PEAK FLOWS, FULL OCP BUILD-OUT CONDITIONS

PIPES THAT ARE FLOWING 100-114% CAPACITY UNDER OCP BUILD-OUT

PIPES THAT ARE FLOWING 80-99% OF FULL CAPACITY UNDER OCP BUILD-OUT CONDITIONS
O
NODES THAT SURCHARGE TO THE SURFACE UNDER 100 YEAR PEAK FLOWS, FULL OCP BUILD-OUT CONDITIONS
D
PROJECT IDENTIFIER WITH PIPES TO BE UP SIZED NOTED WITH SIZE, PIPES TO BE DUPLICATED ARE NOTED WITH "DUP" AND SIZE
600 DUP600
244 254
% FULL EXISTING CONDITIONS
% FULL AT OCP BUILD OUT

